



Task and Finish Children's Services Review

Overview of services provided for children
and young people in Epping Forest District

Julie Chandler

Assistant Director

Community Services & Customer Relations

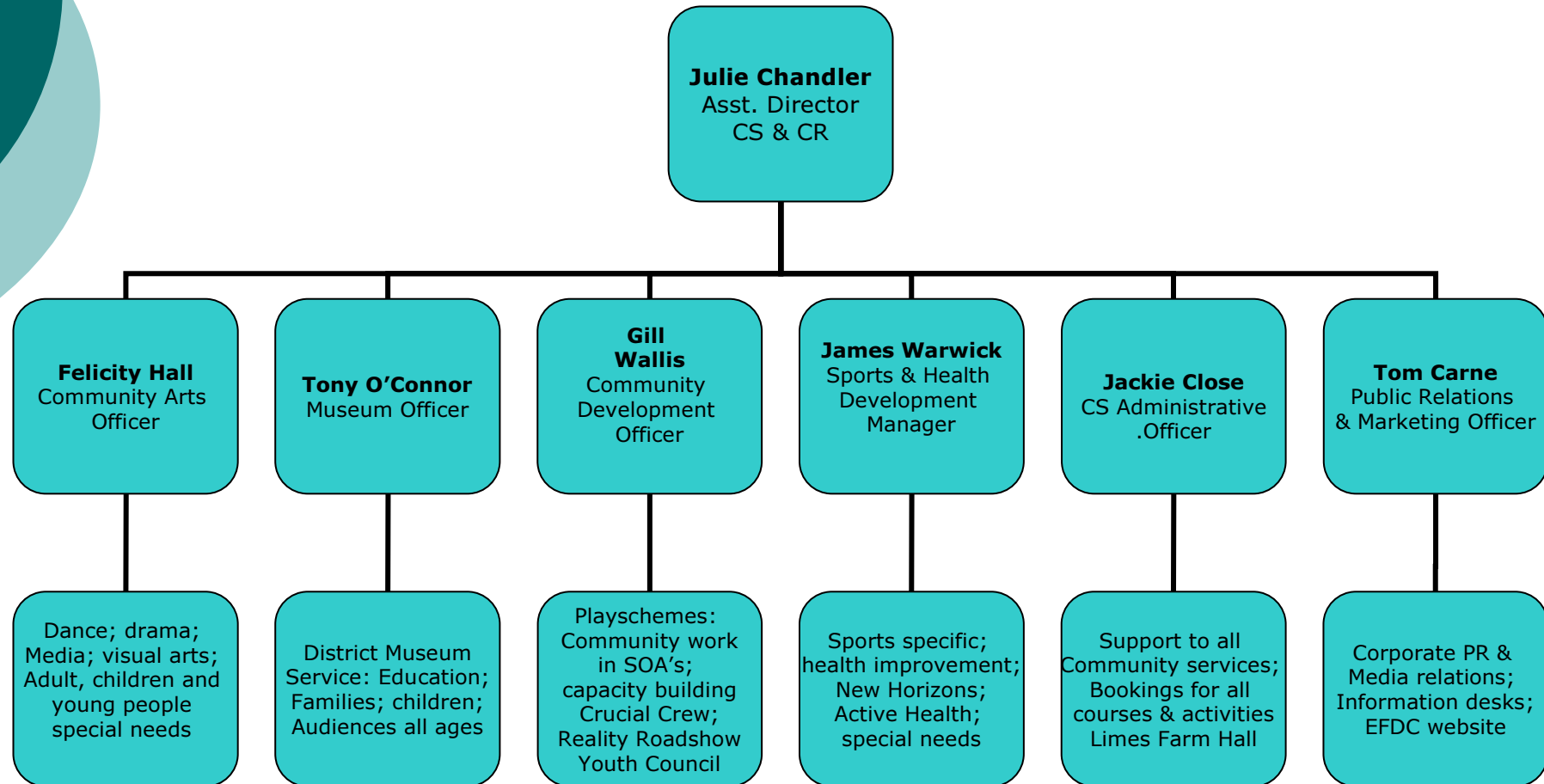
September 2010



Content of Presentation

1. EFDC Community Services Staff structure
2. Overview of EFDC's contribution to services for children and young people
3. Community Service Budgets
4. Essex Overview of Children's & Young People's Services & 'levels' of provision
5. Essex Safeguarding Children responsibilities
6. EFDC Safeguarding responsibilities
7. Acronyms unveiled....
8. Role of the Children's Services Task & Finish Group

EFDC Community Services & Customer Relations Structure





What services are provided by EFDC?

EFDC services are primarily provided for children and young people 5 years+, although targeted programmes are also provided for under 5's and up to 25's with special needs

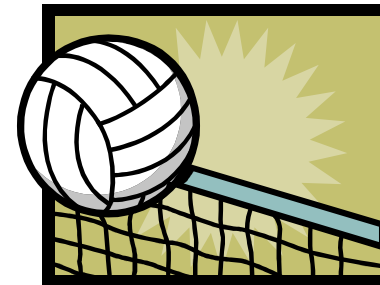
- Sports, physical activity and health improvement programmes (including children with special needs)
- Holiday playschemes, activities and events
- Dance, theatre and arts projects and targeted programmes (special needs and looked after children)
- Social inclusion work in SOA's / disadvantaged areas targeted at young people
- In-school roadshows and projects to promote health, safety and well being (Crucial Crew, Reality Roadshow)
- Externally funded projects (eg. *HealthWorks*)

Examples of EFDC work

The Council's Community Services Department provides a very wide range of programmes, activities and events for children and young people, including those with additional needs. Much of this provision is funded through external funding secured via competitive application processes. The following provides an idea of the types of provision:

Social inclusion programmes –

targeted sports, dance and arts sessions aimed at young people in disadvantaged areas, to assist in the reduction of anti-social behaviour, crime and vandalism. An example of this is the Limes Farm Project which provides football, multi-sport and dance programme 2 x nights per week for 13 – 18's. Benefits – reduction in ASB, young leaders trained as coaches, greater community respect



Targeted programmes for children with additional needs

– trampolining classes for children identified by schools as having low self esteem / confidence issues, low achievers or those with moderate disabilities

More examples....

- **Work with The Willows** – The Arts team undertakes a range of work with children and young people who are 'looked after' and live at 'The Willows', Ongar. Most of the work focuses on using the arts to encourage self esteem; improve interpersonal skills and develop better relationships between residents. Many of these youngsters are transitory and the arts provides an 'even playing field' for them.

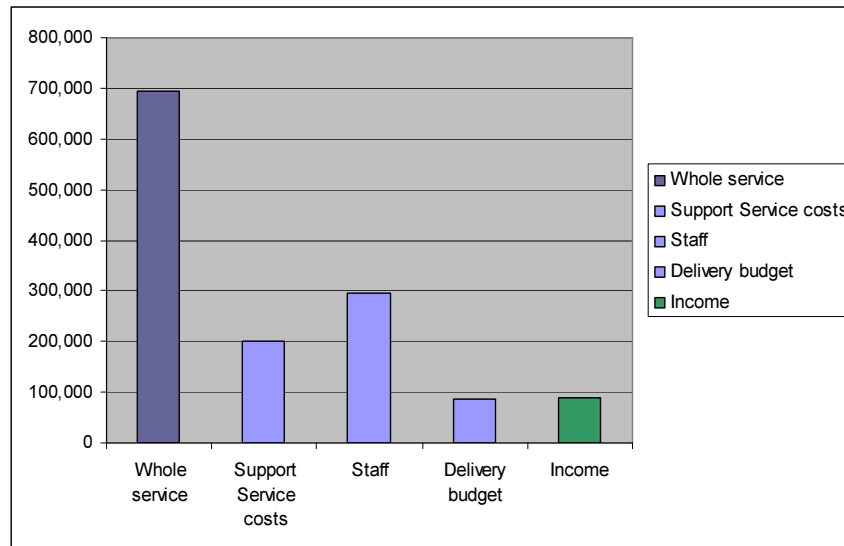


Community Clubs – The Community Development Team focuses on the 4 x Super Output Areas of the District- Ongar, Waltham Abbey, Limes Farm (Chigwell) and Oakwood Hill, Loughton. In these areas where there is no direct provision, the team works with the community to establish clubs for children and young people. These range from environmental focus clubs to arts/crafts and multi-sport clubs all which are based in the immediate locality.

Community Services Operational Budgets

The budgets for Community Services are predominantly utilised for staff costs, as the majority of work is delivered by staff themselves in conjunction with a range of external partners. The following chart outlines the approximate annual budget for all sections within Community Services (with exception of the Museum) and covers 'all costs' associated with the service:

- CS Administration Team, Community Arts
Sports and Health development
Community Development



The Museum costs amount to £434K per annum, broken down as follows:
Support Services - £94k
Staff £215k
Buildings £120k
Delivery £5k
Income £5k

**Community Services
Delivery Budget will
see £35k saving in
2011/12.**

**External Funding
secured in 2008-'11**

= £900k+



Essex wide service provision....



Essex Key Service providers for pre-birth to 19's

The following organisations are the key service providers for children and young people throughout Essex:

- Essex County Council
- NHS/Primary Care Trusts
- Epping Forest District Council
- Voluntary Sector
- Private Sector



What services are provided?

Essex County Council:

- Education – primary, secondary, targeted
- Social Care – looked after children (35x C&YP in Epping Forest), safeguarding, family support, CAMH's
- Youth Services – buildings (2 x in EF – Ongar and Loughton) and outreach work
- MAAG's – Lead on Multi - Agency Action Groups
- Children's Centres

NHS and PCT:

- Acute and Primary Care services
- Antenatal, Breastfeeding
- Mental & Emotional Health & Well Being



What services are provided? (Cont)

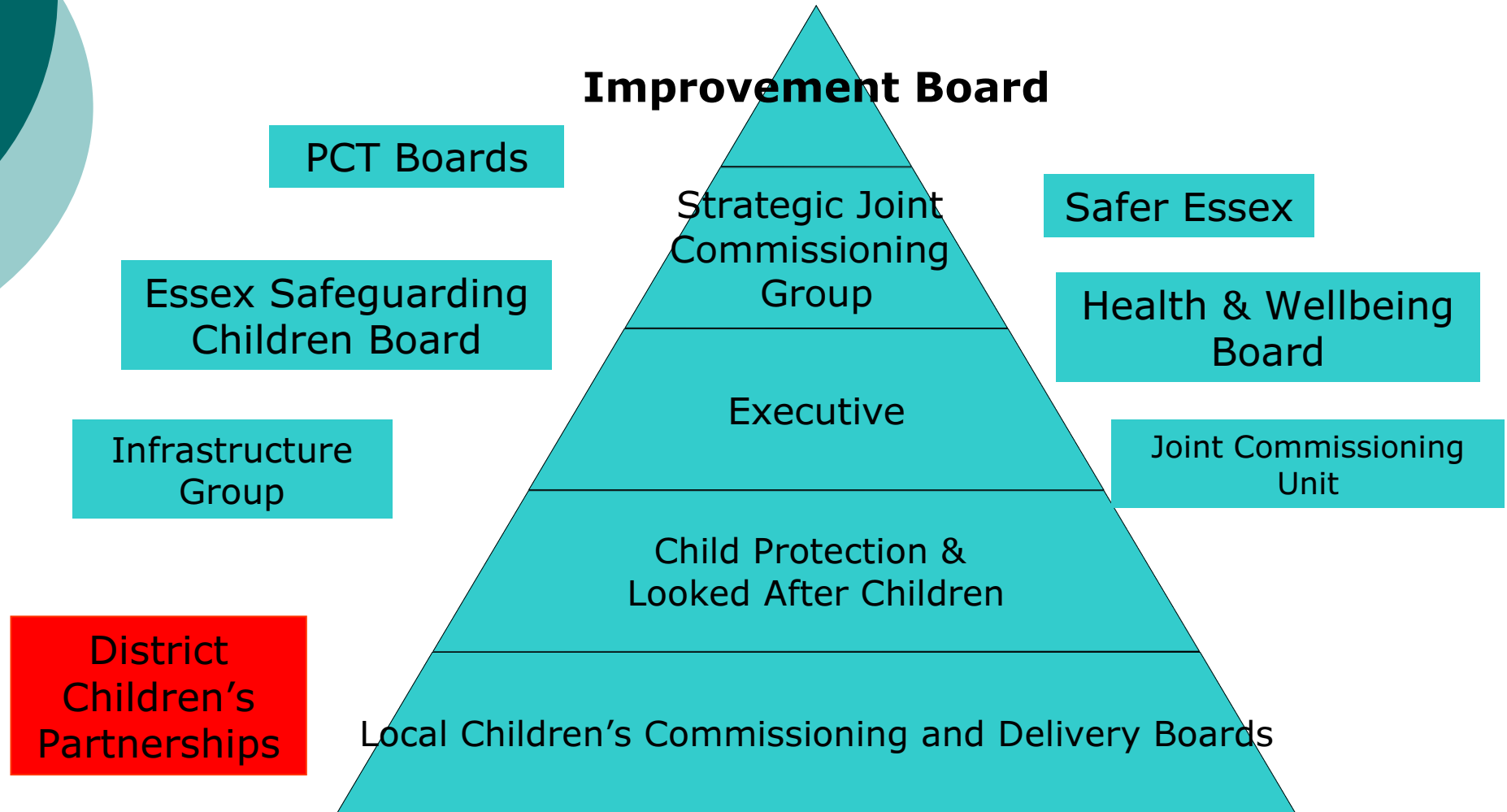
Voluntary Sector:

- Youth activities
- After school clubs
- Targeted work with special needs

Private Sector:

- Sports clubs and classes
- Dance & performing arts clubs
- Childcare & Nurseries

Essex Children's Services Structure





‘Levels’ of provision (as defined by ECC)

Essex County Council classifies children and young people into four categories of wellbeing/need:

- **Level 1 – Universal**

Children & YP with no additional Needs

- **Level 2 – Vulnerable**

Children & YP with additional needs

- **Level 3 – Complex**

Children & YP with complex needs

- **Level 4 – Acute**

Children and YP whose needs are complex, prolonged or critical



Safeguarding and Promoting the Welfare of Children.....



Safeguarding Children and Young people

Essex Safeguarding Children Board

- Responsible for monitoring performance of safeguarding throughout ECC and wider partners and for auditing processes including Serious Case Reviews
- Partners include: ECC staff from Children's Services, Social Care, Education etc., Police, District Council X 2, Voluntary Sector, NHS, Probation...
- 'Section 11 Audits' required of *District and Borough Councils, PCT/NHS, Schools etc

*Detailed self audit of services provided by Council in regard to safeguarding and promoting the welfare of children. This includes EFDC Policy and Procedures; Recruitment and Selection (CRB etc), management structures and lines of responsibility and frontline delivery – community services, housing and others. Also challenges customer input to services provided and regard to children and young people with additional needs. This is assessed by independent Safeguarding authority



West Stay Safe Group

- Newly formed to replace Local Safeguarding Group – consists of 'local' reps from Social Care, NHS and PAH (Consultant Paediatrician & Lead CP Nurse), Schools, District and Borough Councils, Police, Voluntary Sector, wide range of ECC staff – MAAG, Infrastructure Group, Essex Drug and Alcohol Action Team etc.
- Purpose of Group:
 - Assess training needs and provide training
 - Ensure effective communication regarding SCR's
 - Review local performance
 - Promote clear access and referral routes
 - Produce an action plan that responds to local issues



EFDC Policy, Procedures and implementation of Safeguarding practice

- Safeguarding Policy – updated June 2009
- Service specific procedures
- Corporate Safeguarding Group – Reps from all service areas, Member rep, VAEF, SLM (Group promoted as Best Practice in Essex)
- New 'whole Council' training programme - being implemented Autumn 2010. To additionally cover frontline staff in Information; Benefits; Planning/Building Control and all Members
- **Section 11 Audit** - result Effective or 'Exceeds Requirements' overall. However, scored as 'Less Effective' in respect of not having a HR Safer Recruitment Policy; need for inclusion of Safeguarding training within formal induction process and storage of Child Protection data



Acronyms unveiled.....

- MAAG = Multi Agency Action Group
- CYP= Children and Young People
- CYPP= Children and Young People's Plan – (no longer)
- CYPSP – Children and Young People's Strategic Partnership (no longer exists)
- ESCB= Essex Safeguarding Children Board
- LCTB = Local Children's Trust Board
- LSSG= Local Stay Safe Group
- IYS = Integrated Youth Services
- YOF = Youth Opportunities Fund
- ECVYS = Essex Council for Voluntary Youth Services
- CAF = Common Assessment Framework
- CRB= Criminal Records Bureau

- CAFCASS = Children and Family Court Advisory and Support Service
- IRT = Initial Response Team
- CAMHS = Children and Adolescent Mental Health Services



Task & Finish Group Role

- Review the purpose and operation of new arrangements for children's services in Essex and the new Essex structure
- Challenge ECC theoretical/'strategic' plans
What is the real effect of services 'on the ground'?
- Review Essex County Council Youth Services in Epping Forest District
- Review arrangements for Safeguarding & Promoting the Welfare of Epping Forest's children, seeking to identify communication pathways and effectiveness of information sharing across the wider partnership
- Review current provision of children and young people's services provided directly by the Council
- How do we make a positive impact on C&YP lives with less resources?
- What are our (EFDC) priorities?